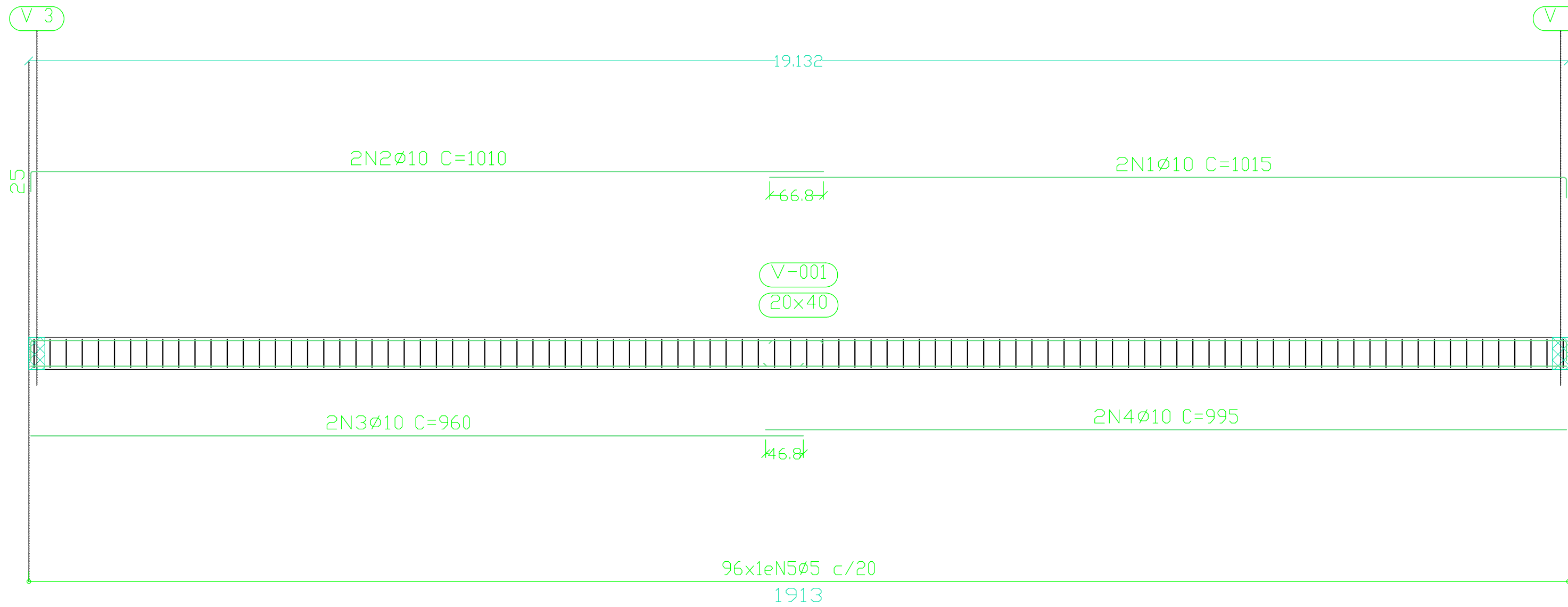
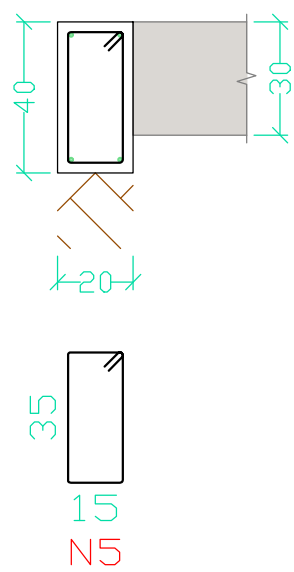
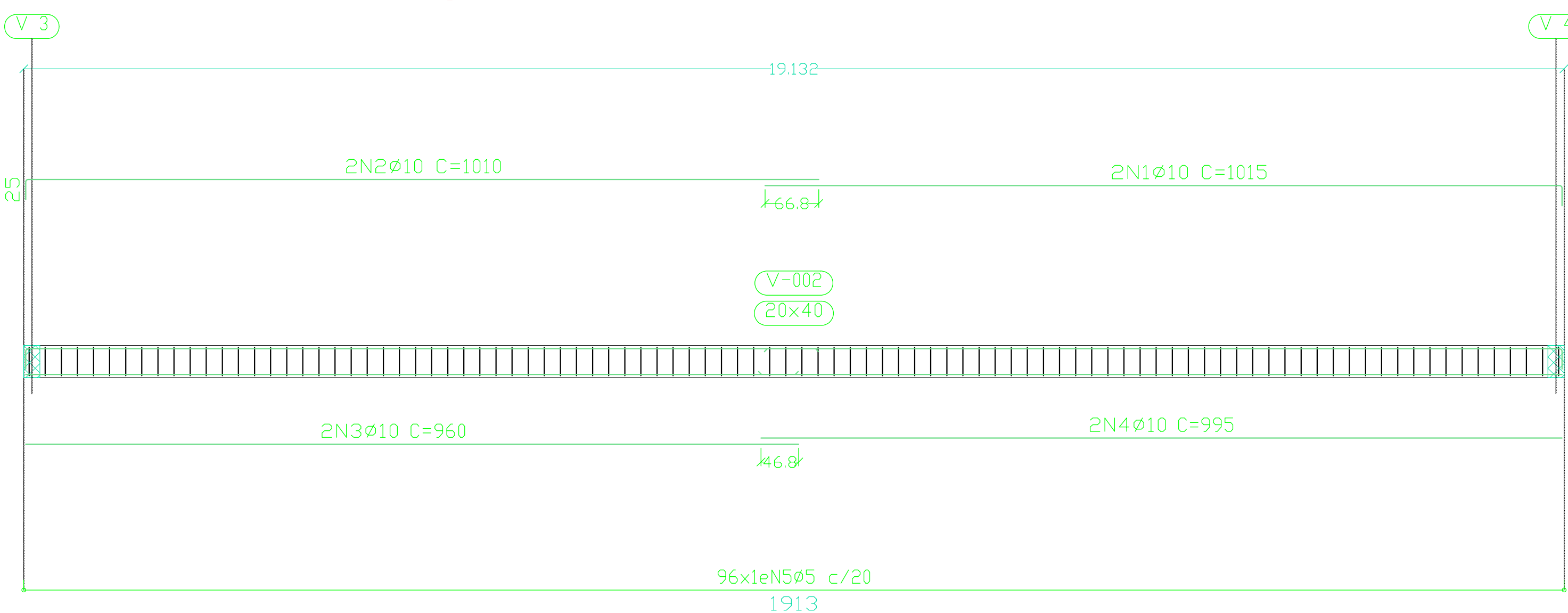
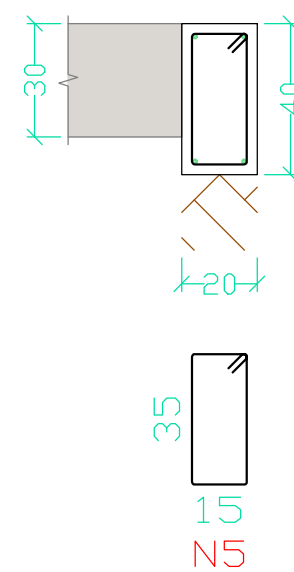


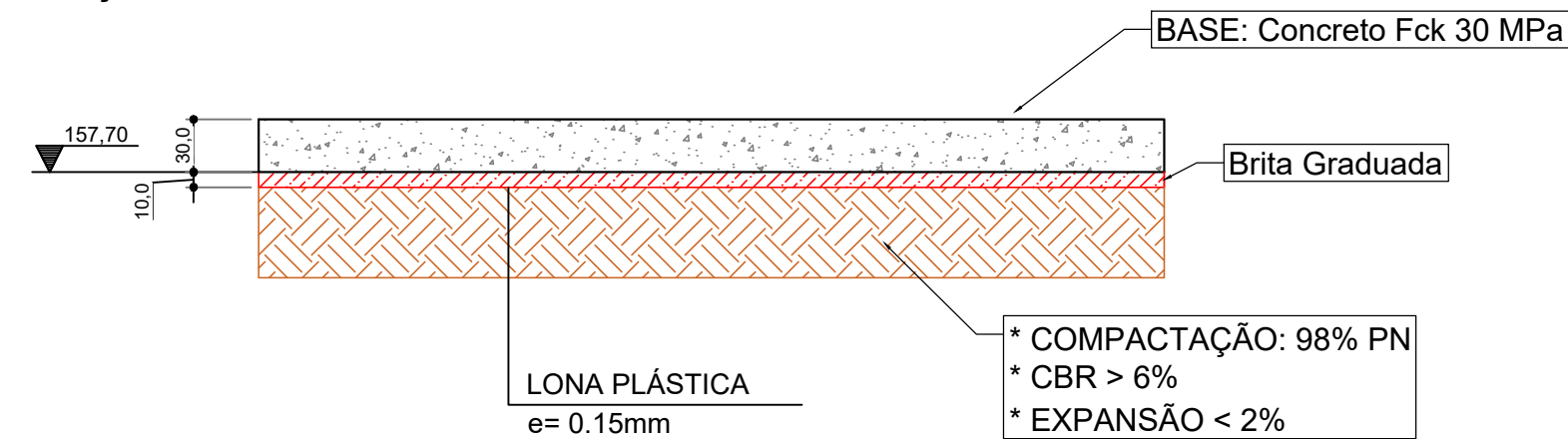
V 1
Escala vigas 1:50
Escala seções 1:20



V 2
Escala vigas 1:50
Escala seções 1:20

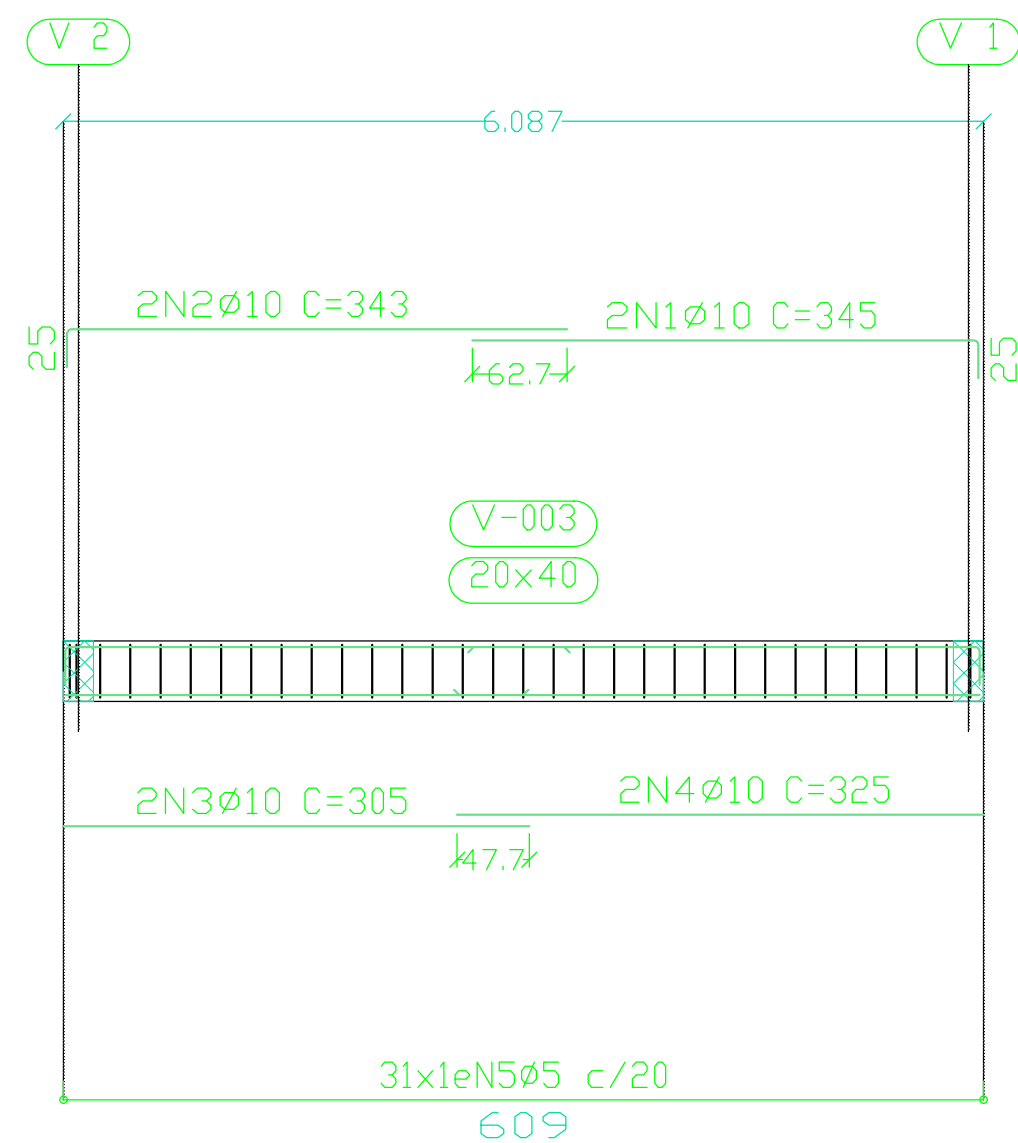
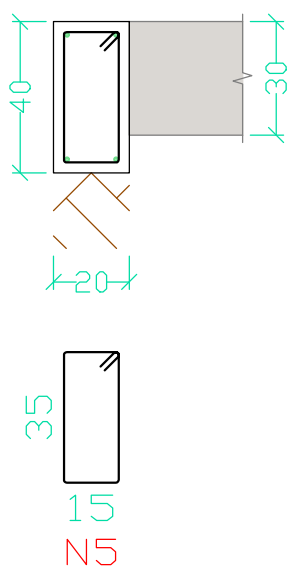


*SEÇÃO TRANSVERSAL DAS BASES H=30

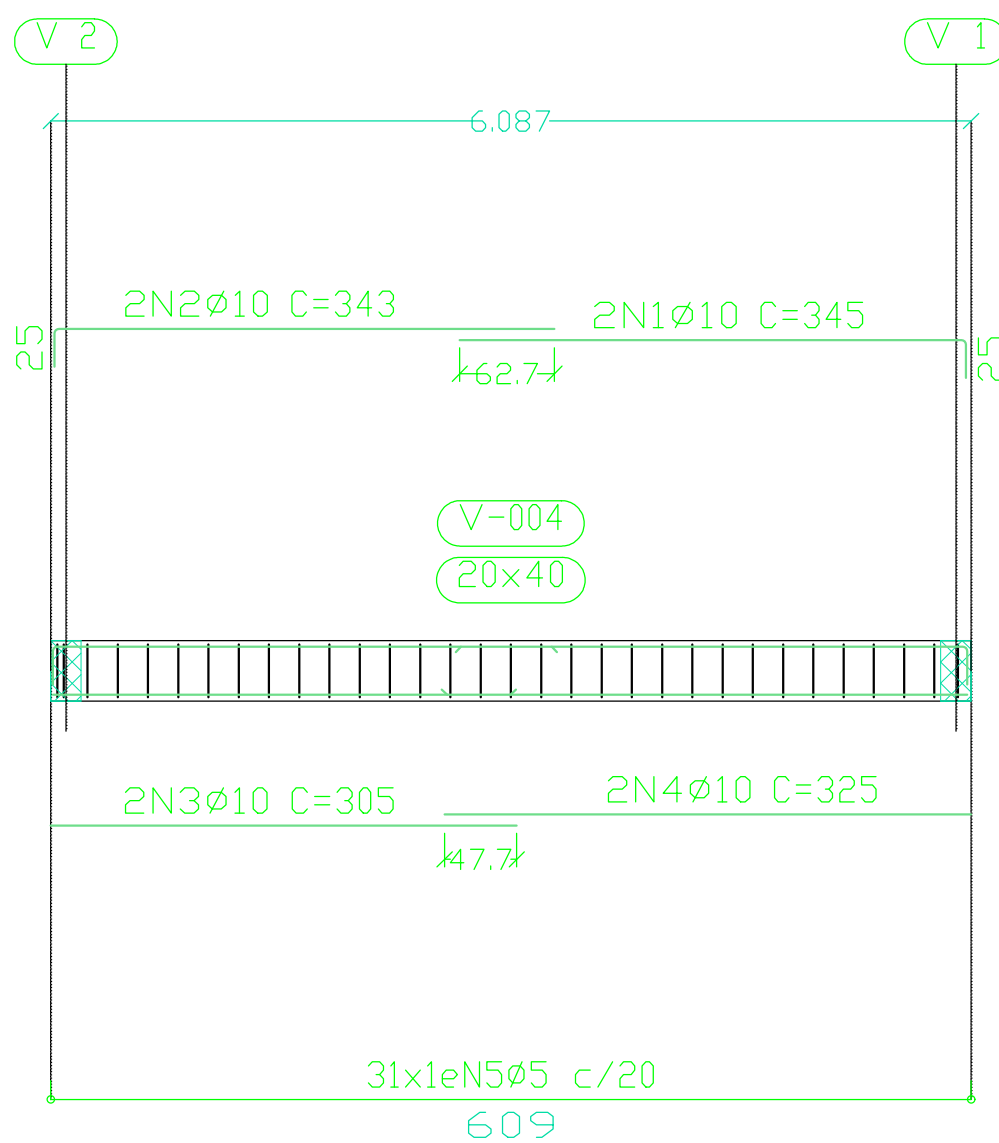
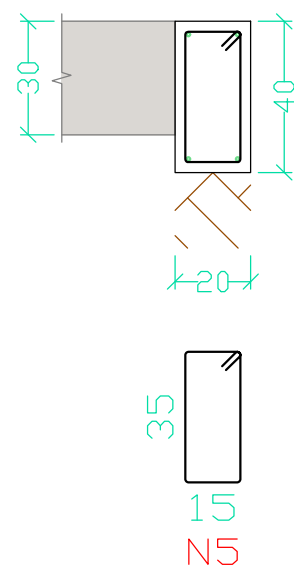


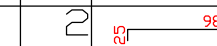
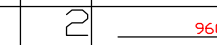
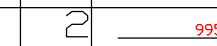
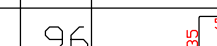
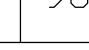
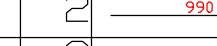
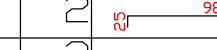
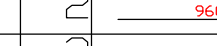
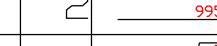

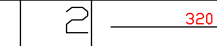
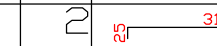
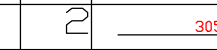
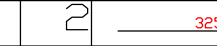

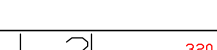
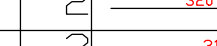
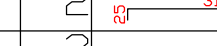
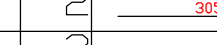
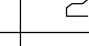
2.1 SEÇÃO TRANSVERSAL SEM ESCALA

V 3
Escala vigas 1:50
Escala seções 1:20



V 4
Escala vigas 1:50
Escala seções 1:20



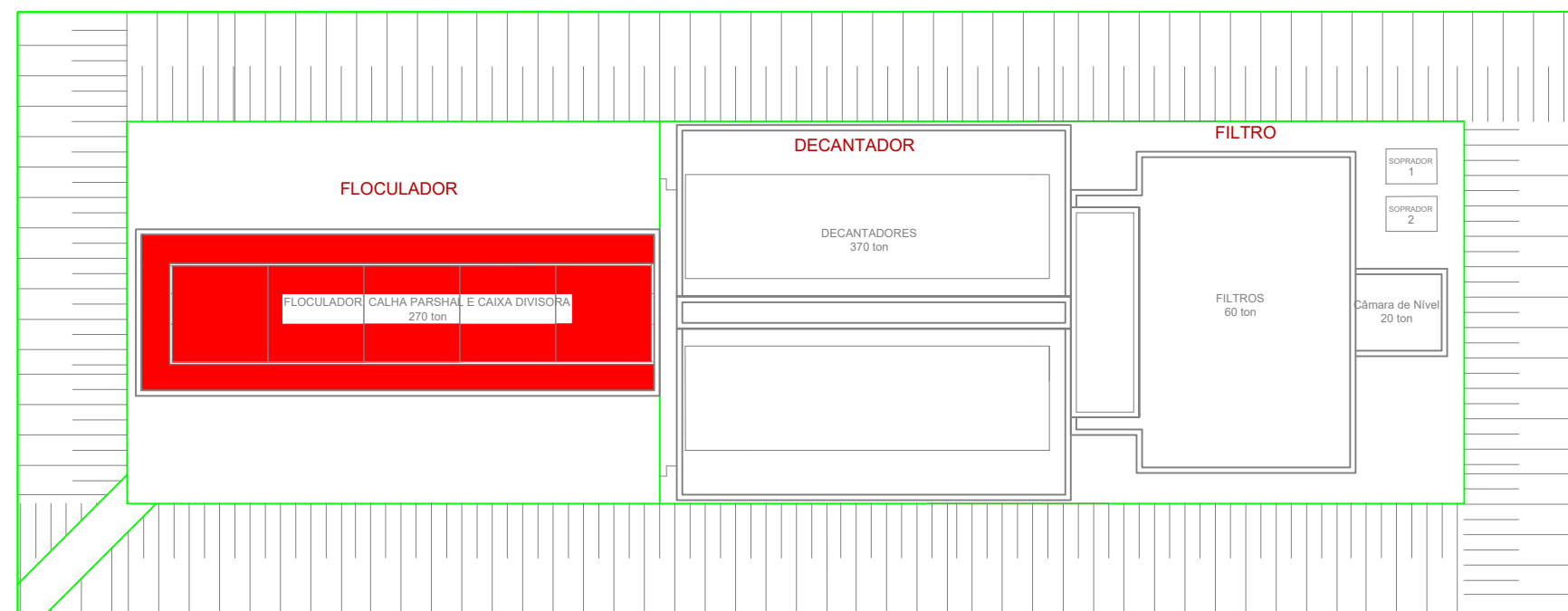
Elemento	Pos.	Diam.	Q.	Esquema (cm)	Comp (cm)	Total (cm)	CA-50 (kg)	CA-60 (kg)
V 1	1	Ø10	2		1015	2030	12.5	
	2	Ø10	2		1010	2020	12.4	
	3	Ø10	2		960	1920	11.8	
	4	Ø10	2		995	1990	12.3	
	5	Ø5	96		108	10368		16.3
	Total+10%						53.9	17.9
V 2	1	Ø10	2		1015	2030	12.5	
	2	Ø10	2		1010	2020	12.4	
	3	Ø10	2		960	1920	11.8	
	4	Ø10	2		995	1990	12.3	
	5	Ø5	96		108	10368		16.3
	Total+10%						53.9	17.9
V 3	1	Ø10	2		345	690	4.3	
	2	Ø10	2		343	685	4.2	
	3	Ø10	2		305	610	3.8	
	4	Ø10	2		325	650	4.0	
	5	Ø5	31		108	3348		5.2
	Total+10%						17.9	5.7
V 4	1	Ø10	2		345	690	4.3	
	2	Ø10	2		343	685	4.2	
	3	Ø10	2		305	610	3.8	
	4	Ø10	2		325	650	4.0	
	5	Ø5	31		108	3348		5.2
	Total+10%						17.9	5.7
Ø5:							0.0	47.2
Ø10:							125.7	0.0
Total:							125.7	47.2

Resumo Aço	Comp. total	Peso+10%	Total
Desenho de vigas	(m)	(kg)	
CA-50 Ø10	262.6	126	126
CA-60 Ø5	339.1	47	47
Total			173

2 DET. VIGAS - BASE FLOCULADOR (NÍVEL 153,04) ESC 1:50

CONCRETO USINADO BOMBEADO						
CRITÉRIOS ADOTADOS						
PAVIMENTO	ELEMENTO	COBRIMENTO	fck		SLUMP	A/C
		cm	MPa	kgf/cm²		
GERAL	BASE	2.5	30	300	10 ± 2 cm	0.5

OBSERVAÇÃO: UTILIZAR BRITA 0 E 1.



NOTAS

R00	23/07/21	Versão Inicial do Projeto
REV. Nº	DATA	DESCRIÇÃO

AUTOR DO PROJETO:
EXCELÊNCIA ENGENHARIA E MEIO AMBIENTE LTDA EPP
00.564.373/0001-95
Eng. Thaise L. P. Marques Neis
CREA: 1213568269

INTERESSADO:
DAE - DEPARTAMENTO DE ÁGUA E ESGOTO DE VÁRZEA GRANDE
CNPJ: 02.555.079/0001-42

EMPREENHIMENTO:
ETA-BOM SUCESSO

ENDEREÇO:
Rod MT 050, Jardim Botânico, Várzea Grande - MT
Latitude: 15°42'37.08"S/ Longitude: 56° 8'12.10"O

ASSUNTO:
Estação de Tratamento de Água - ETA
Detalhamento de viga de bordo - Base Floculador - (Nível 153,04)

NOMENCLATURA:

DATA: 23/07/2021
ESCALA: INDICADA

FOLHA:

002/002